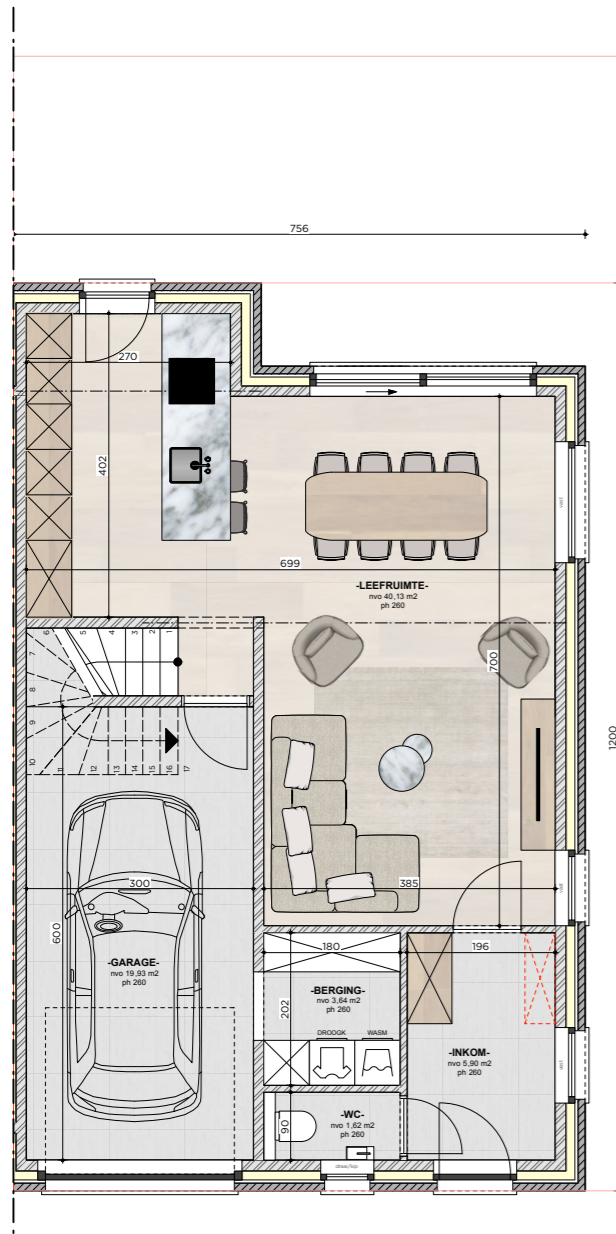
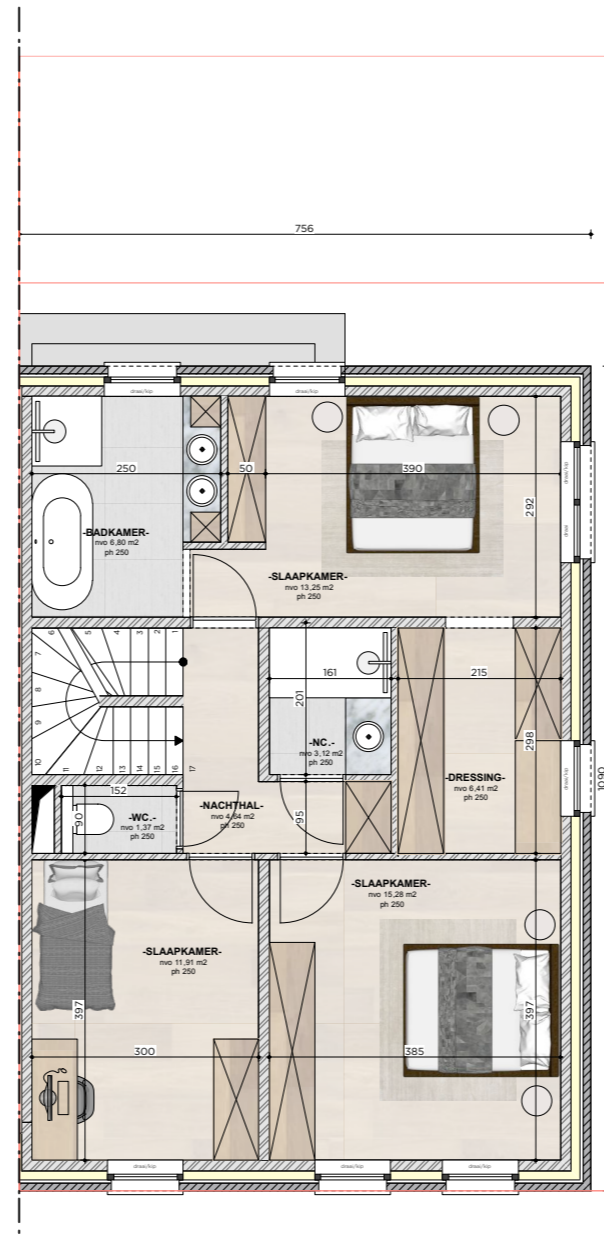


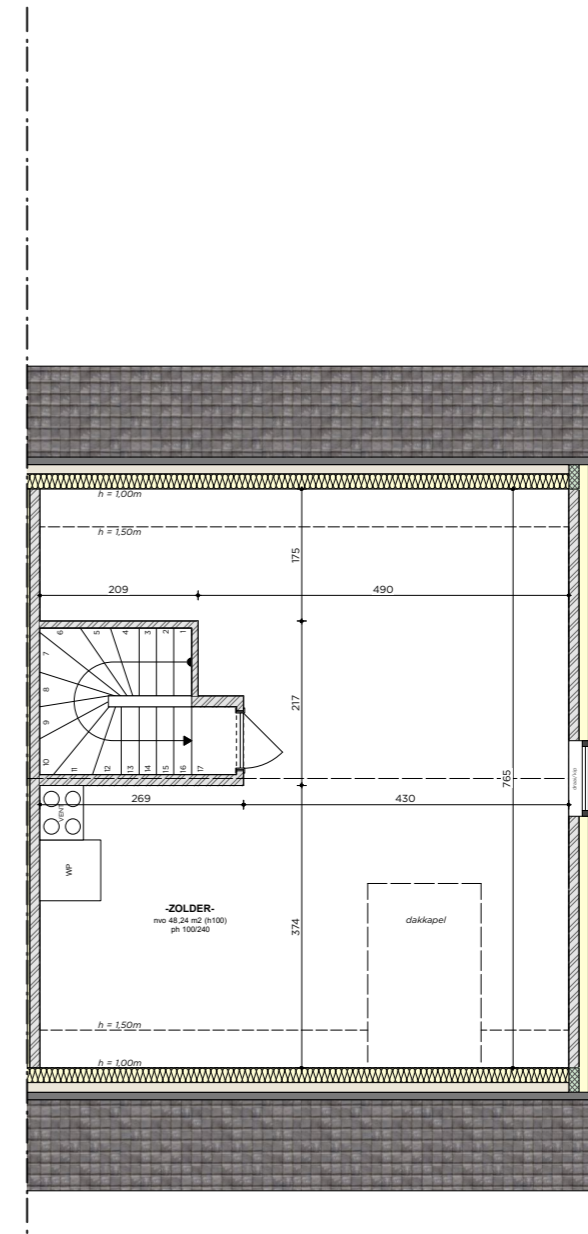
Gelijkvloers



Verdieping



Zolder



BRUTO 168,71 m<sup>2</sup> (excl. zolder)  
VERKOOP 216,95 m<sup>2</sup> (incl. zolder)

- 00 86,37 m<sup>2</sup> (bruto)
- 01 82,34 m<sup>2</sup> (bruto)
- ZO 48,24 m<sup>2</sup> (netto)

garage

